

# Trends in Nursing Facility Standard Health Survey Citations

American Health Care Association  
Reimbursement and Research Department

December 2011



# Trends in Nursing Facilities Standard Health Survey Citations

## TABLE OF CONTENTS

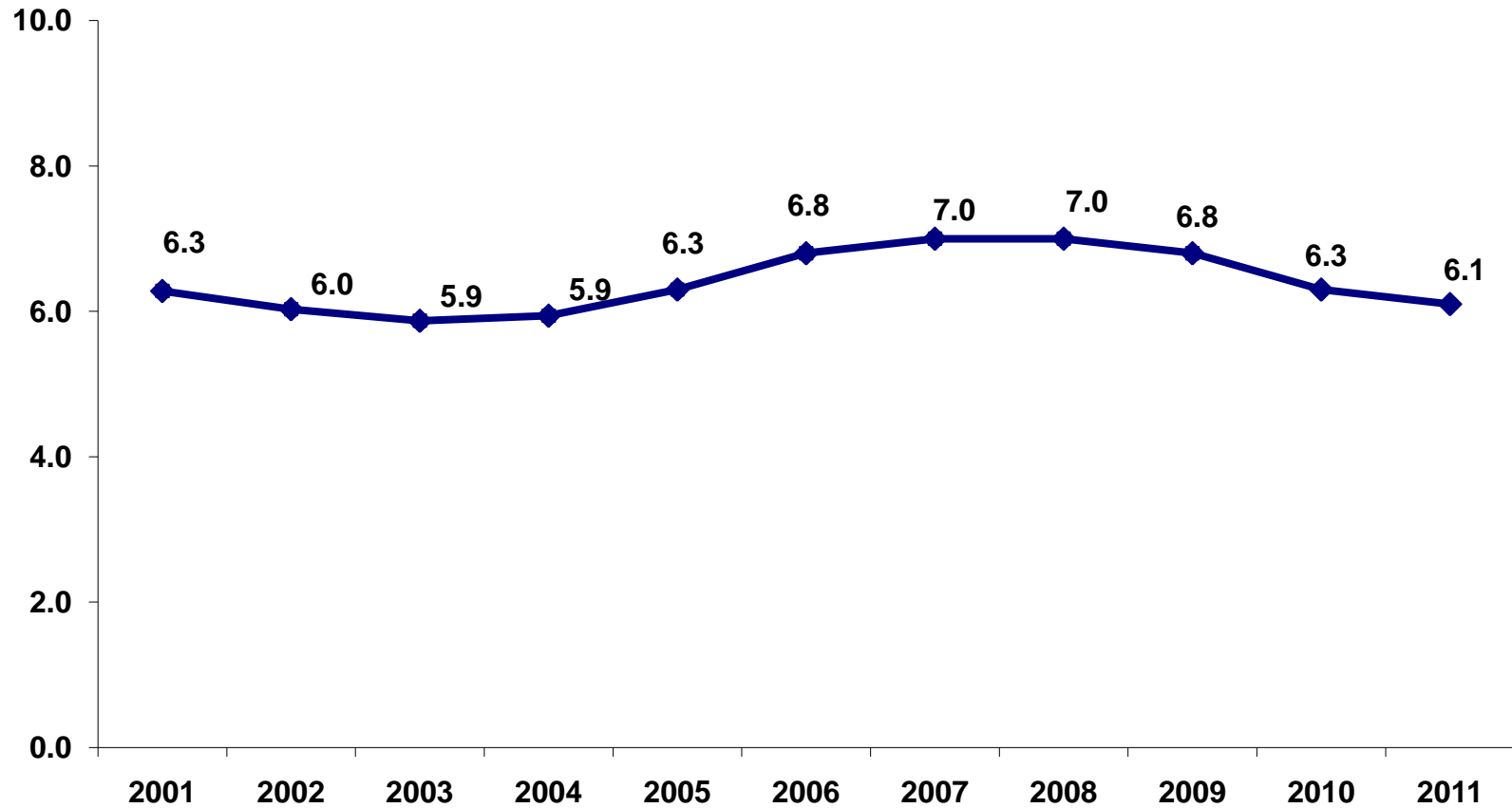
<b>Table of Contents</b> .....	2
Average Number of Standard Health Survey Citations in Nursing Facilities Over Time.....	3
Percentage of Standard Health Survey Citation-Free Nursing Facilities Over Time.....	4
Percentage of Nursing Facilities in Substantial Compliance with Standard Health Survey Over Time.....	5
Percentage of Nursing Facilities with Standard Health Survey Substandard Quality of Care Citations Over Time .....	6
Percentage of Nursing Facilities with Standard Health Survey Immediate Jeopardy Citations Over Time .....	7
<b>Overview of OSCAR Nursing Facility Citation data</b> .....	8
<b>Contact Information</b> .....	9

**American Health Care Association  
Reimbursement and Research Department**





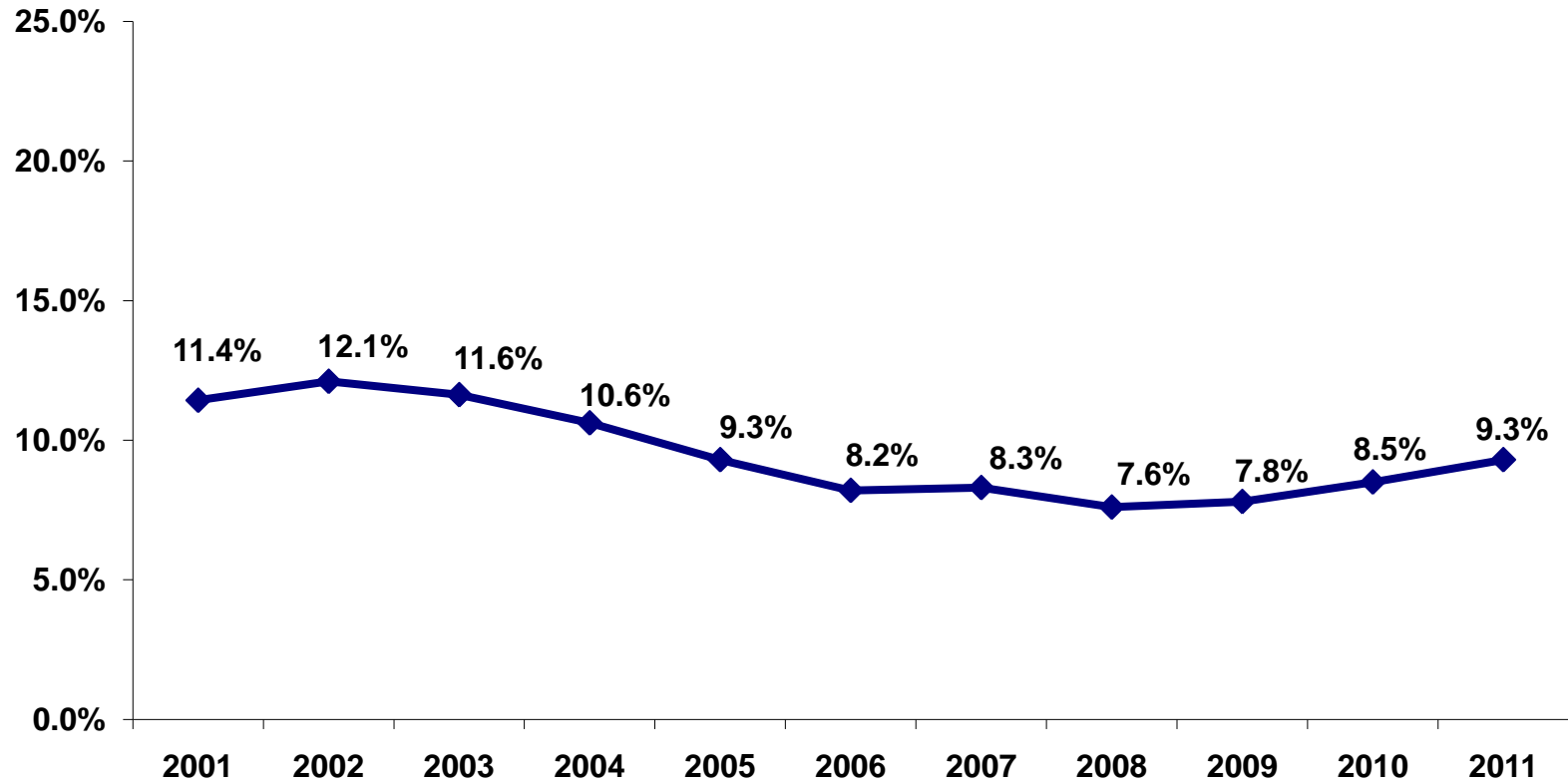
## Average Number of Standard Health Survey Citations in Nursing Facilities Over Time



Source: Computed by AHCA R&R department using CMS Nursing Facility OSCAR standard health survey data. Various years. December.  
American Health Care Association - Research Department



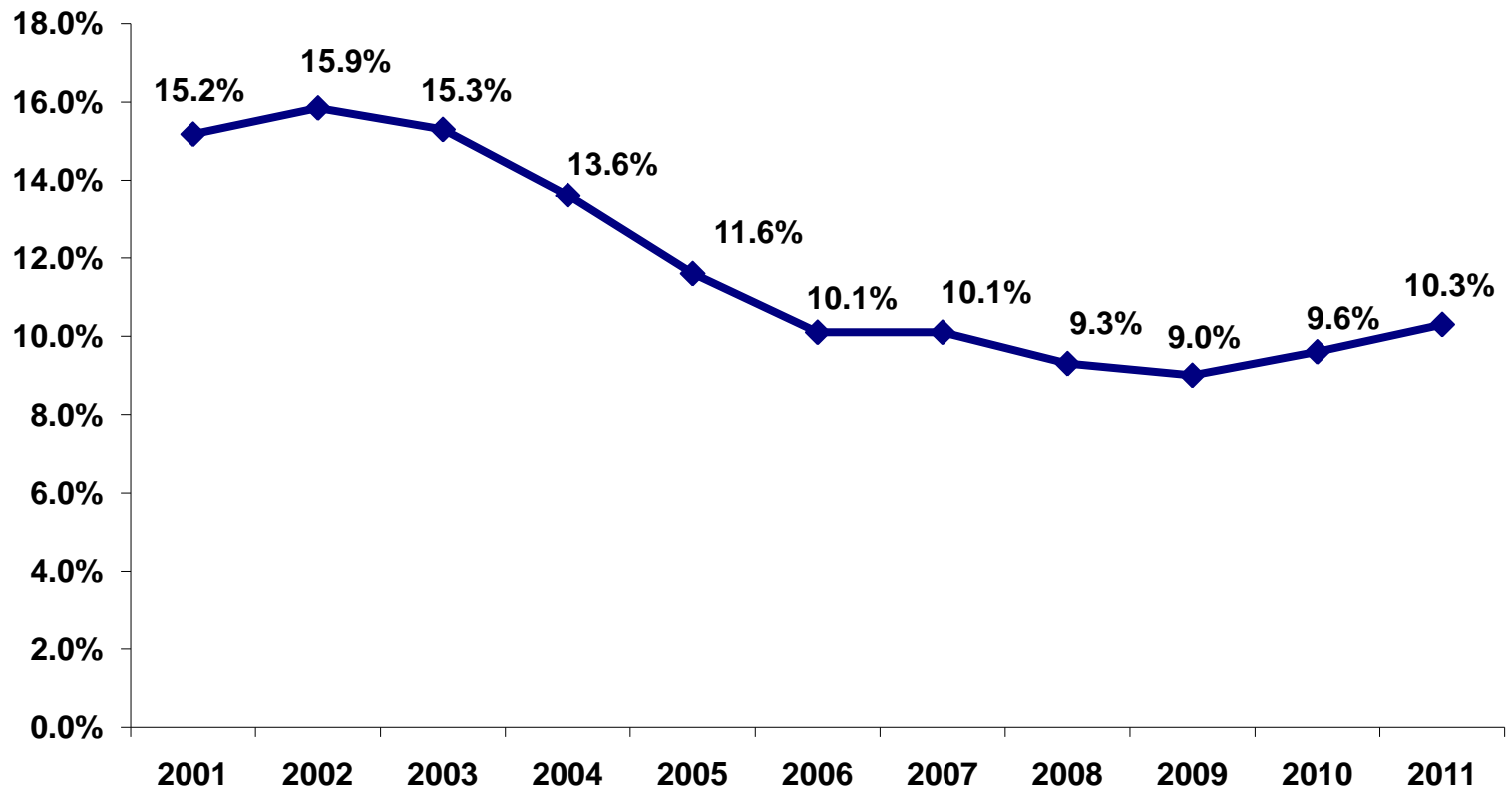
## Percentage of Standard Health Survey Citation-Free Nursing Facilities Over Time



Source: Computed by AHCA R&R department using CMS Nursing Facility OSCAR standard health survey data. Various years. December. American Health Care Association - Research Department



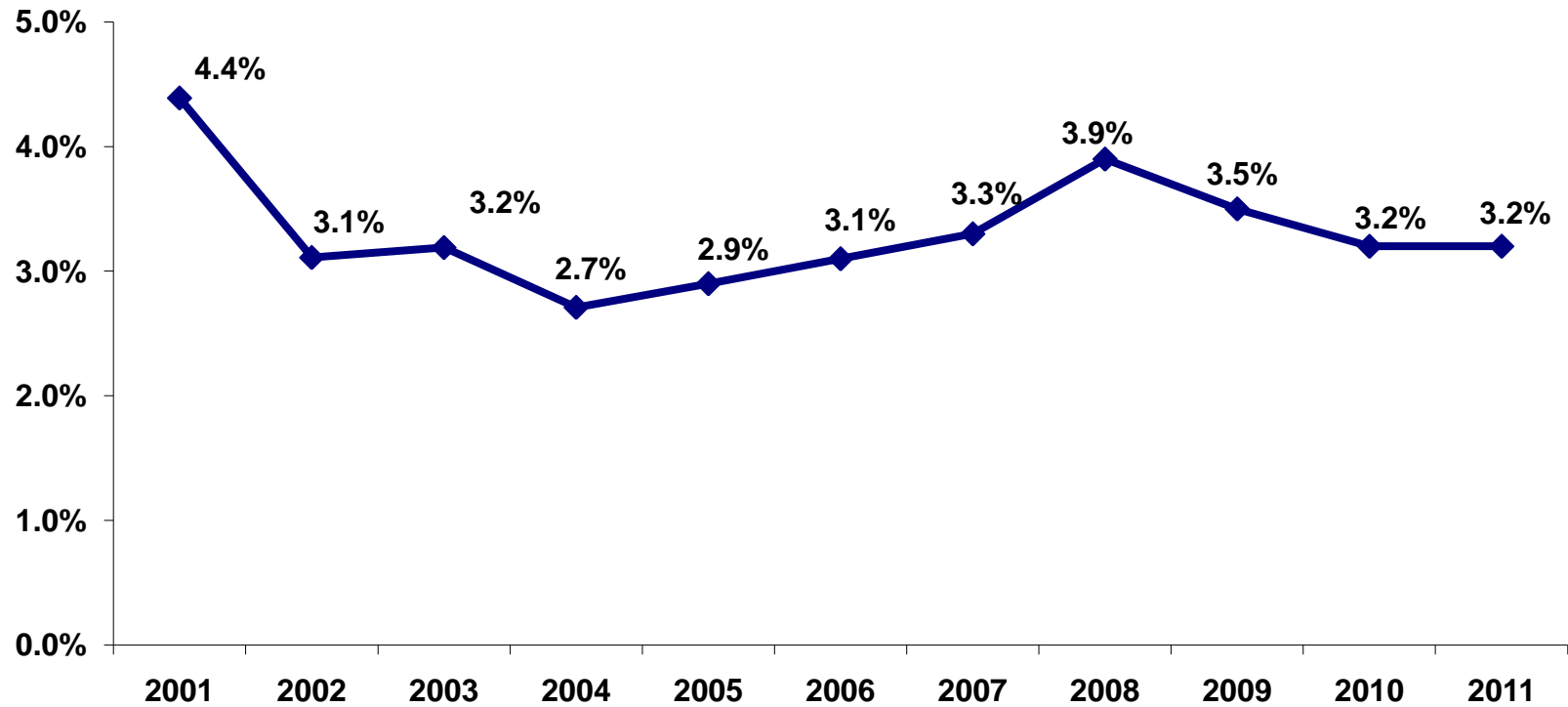
## Percentage of Nursing Facilities in Substantial Compliance with Standard Health Survey Over Time



Source: Computed by AHCA R&R department using CMS Nursing Facility OSCAR standard health survey data. Various years. December. American Health Care Association - Research Department



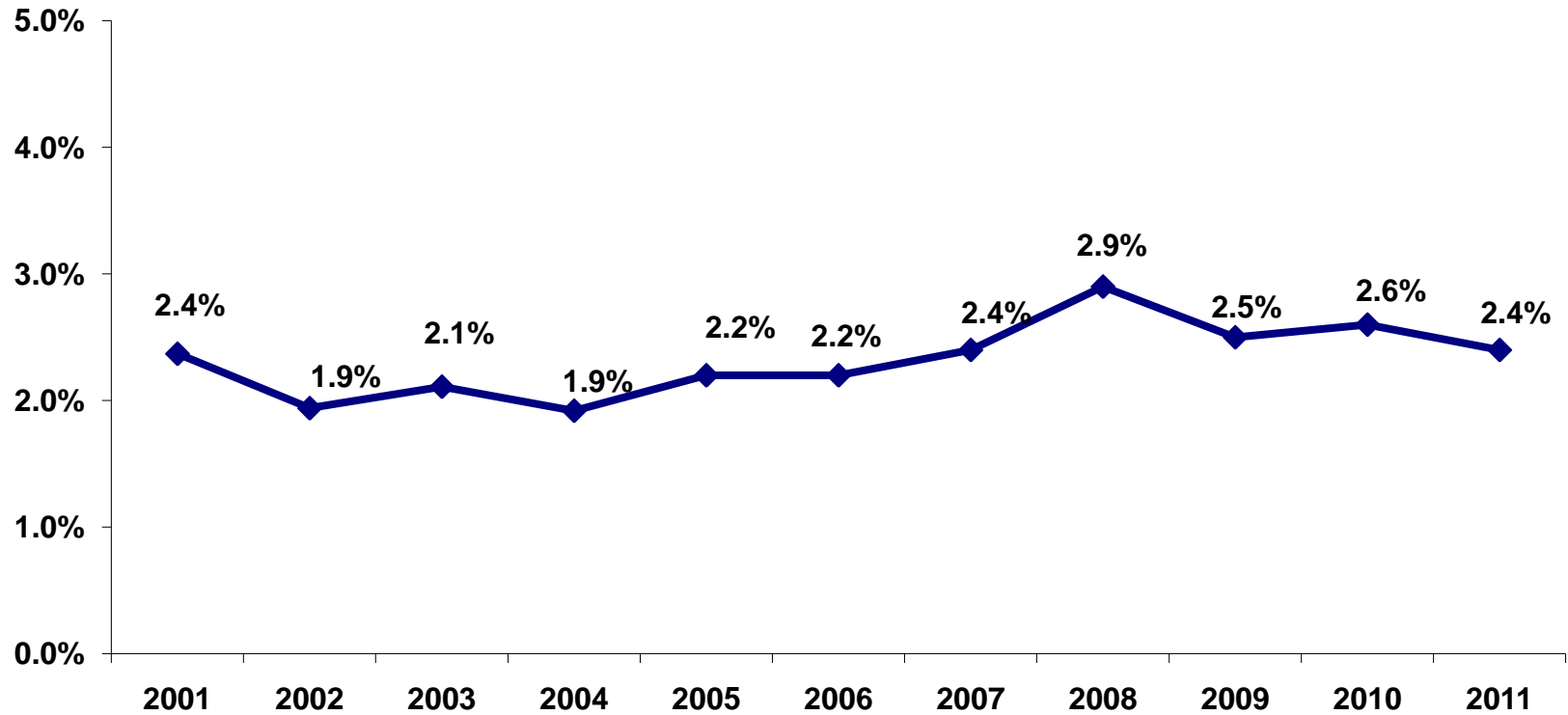
## Percentage of Nursing Facilities with Standard Health Survey Substandard Quality of Care Citations Over Time



Source: Computed by AHCA R&R department using CMS Nursing Facility OSCAR standard health survey data. Various years. December. American Health Care Association - Research Department



## Percentage of Nursing Facilities with Standard Health Survey Immediate Jeopardy Citations Over Time



Source: Computed by AHCA R&R department using CMS Nursing Facility OSCAR standard health survey data. Various years. December. American Health Care Association - Research Department



## An Overview of OSCAR Data

**Online Survey, Certification and Reporting (OSCAR)** is a data network maintained by the Centers for Medicare and Medicaid Services (CMS) in cooperation with the state long-term care surveying agencies. OSCAR is a compilation of all the data elements collected by surveyors during the inspection survey conducted at nursing facilities for the purpose of certification for participation the Medicare and Medicaid programs.

Onsite evaluations are conducted by state survey agencies. The findings of these surveys are entered into the OSCAR database. The evaluations occur at least once during a 15-month period, or as a result of a complaint being investigated. The state survey agencies are responsible for entering survey information into the OSCAR database and providing updates as needed. Every attempt is made by CMS to assure the accuracy and timeliness of the data.

Information on the nursing homes operational characteristics are reported on CMS Form 671 and patient characteristics are reported on CMS Form 672. OSCAR captures facility level information on the operations, patient census and regulatory compliance of nursing facilities.

Information on the nursing homes standard health and life safety deficiencies are reported on CMS Form 2567 by the surveyor at the time of the inspection. Results from the standard health survey are evaluated to determine whether a nursing facility is providing care according to the requirements, which the federal government deems representative of quality care, and whether the care and services provided by the facility meet the assessed needs of each resident. Results from the standard life safety survey are evaluated to determine a facility's compliance with the Life Safety Code fire and building safety standards, which are developed, updated and published by the National Fire Protection Association and incorporated into the federal requirements.

**Citation** is a term used by state surveyors during a nursing facility's annual inspection when they deem that a nursing facility is not in compliance with federal regulations during their annual assessment as mandated by CMS.

**Citation-free** is the result of the annual state inspection of a nursing facility when it is found to be in compliance by state surveyors.

**Substantial Compliance (SC)** in a nursing facility is when all imposed regulations for the scope and severity of all cited deficiencies is recorded at A, B, or C or if the facility is found to be deficiency-free at the time of the survey.

**Substandard Quality of Care (SQC)** became effective on July 1, 1995. A nursing facility is cited as providing substandard quality of care if it receives a deficiency in one or more of the following compliance categories: Quality of Care (F309 - F334), Quality of Life (F240 - F258) or Resident Behavior and Facility Practices (F221 - F226) with a scope and severity level F, H, I, J, K, or L on its standard health survey.

**Immediate Jeopardy (IJ)** is cited if a nursing facility receives any deficiency at scope and severity level J, K, or L (actual harm that possess immediate jeopardy to resident health or safety) on its standard health survey. Consequences include the immediate imposition of remedies as opposed to a grace period for correcting deficiencies.



**American Health Care Association**

1201 L Street, NW  
Washington, DC, 20005  
T: (202) 842-4444  
Email: [research@ahca.org](mailto:research@ahca.org)