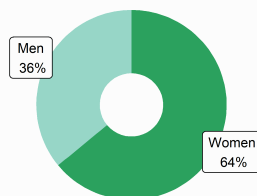


Connecticut BY THE NUMBERS

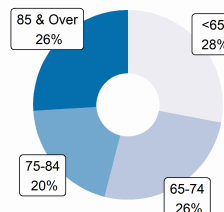
FACTS AND FIGURES FOR THE PROFESSION

ASSISTED LIVING RESIDENTS

Resident Gender



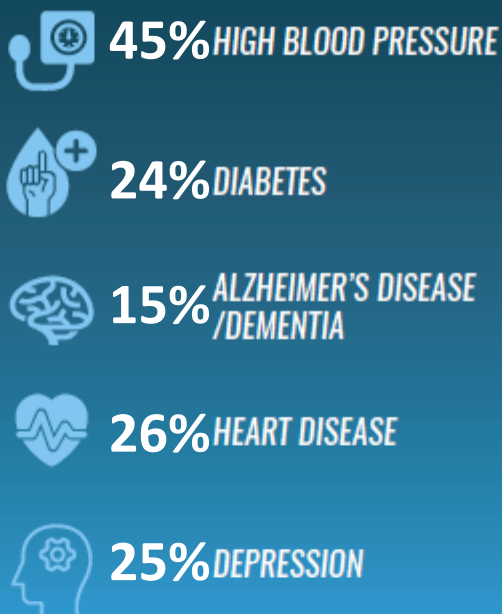
Resident Age



ACTIVITIES OF DAILY LIVING



COMMON CONDITIONS



ASSISTED LIVING PROVIDERS

53 TOTAL AL COMMUNITIES

66% of residents rely on Medicaid for their long term care in assisted living

ECONOMIC IMPACT

*Total impact is the sum of direct, indirect, and induced effects on the economy of the state.
Sources: CDC/NCHS, National Post-acute and Long-Term Care Study (2020), State Licensure Website, IMPLAN Economic Impact Data and Software

WORKFORCE

4,541 jobs direct

6,837 jobs total*

ECONOMIC ACTIVITY

\$485.3 Million direct

\$929.1 Million total*

TAX REVENUE

\$41 Million state/local

\$114 Million federal